



# GPR20 Polyclonal Antibody

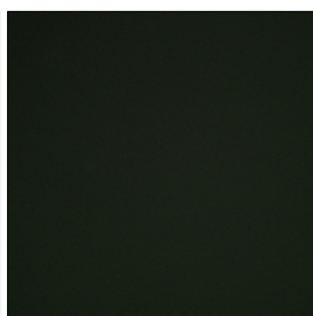
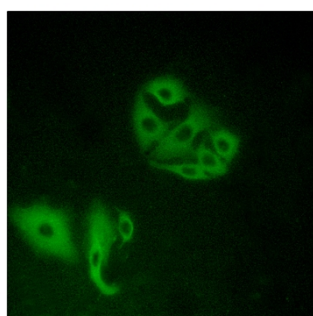
<b>Catalog No</b>	YP-Ab-13326
<b>Isotype</b>	IgG
<b>Reactivity</b>	Human;Rat;Mouse;
<b>Applications</b>	WB;IHC;IF;ELISA
<b>Gene Name</b>	GPR20
<b>Protein Name</b>	G-protein coupled receptor 20
<b>Immunogen</b>	The antiserum was produced against synthesized peptide derived from human GPR20. AA range:291-340
<b>Specificity</b>	GPR20 Polyclonal Antibody detects endogenous levels of GPR20 protein.
<b>Formulation</b>	Liquid in PBS containing 50% glycerol, 0.5% BSA and 0.02% sodium azide.
<b>Source</b>	Polyclonal, Rabbit,IgG
<b>Purification</b>	The antibody was affinity-purified from rabbit antiserum by affinity-chromatography using epitope-specific immunogen.
<b>Dilution</b>	Western Blot: 1/500 - 1/2000. Immunohistochemistry: 1/100 - 1/300. Immunofluorescence: 1/200 - 1/1000. ELISA: 1/5000. Not yet tested in other applications.
<b>Concentration</b>	1 mg/ml
<b>Purity</b>	≥90%
<b>Storage Stability</b>	-20°C/1 year
<b>Synonyms</b>	GPR20; G-protein coupled receptor 20
<b>Observed Band</b>	42kD
<b>Cell Pathway</b>	Cell membrane ; Multi-pass membrane protein .
<b>Tissue Specificity</b>	Ubiquitous with highest levels in intestinal tissues. In the brain detected in thalamus, putamen, and caudate, but not in frontal cortex, pons and hypothalamus.
<b>Function</b>	function:Orphan receptor.,similarity:Belongs to the G-protein coupled receptor 1 family.,tissue specificity:Liver and the brain regions thalamus, putamen, and caudate, but not in frontal cortex, pons and hypothalamus.,
<b>Background</b>	function:Orphan receptor.,similarity:Belongs to the G-protein coupled receptor 1 family.,tissue specificity:Liver and the brain regions thalamus, putamen, and caudate, but not in frontal cortex, pons and hypothalamus.,
<b>matters needing attention</b>	Avoid repeated freezing and thawing!



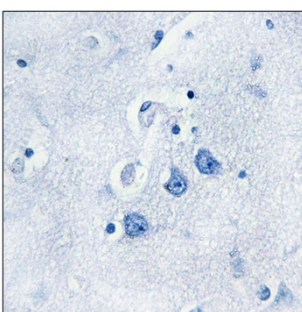
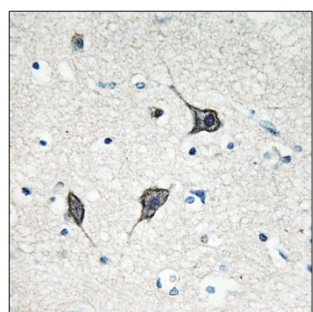
## Usage suggestions

This product can be used in immunological reaction related experiments. For more information, please consult technical personnel.

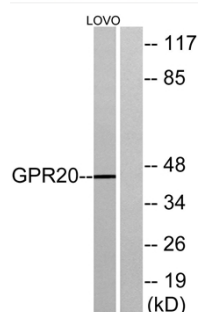
## Products Images



Immunofluorescence analysis of A549 cells, using GPR20 Antibody. The picture on the right is blocked with the synthesized peptide.



Immunohistochemistry analysis of paraffin-embedded human brain tissue, using GPR20 Antibody. The picture on the right is blocked with the synthesized peptide.



Western blot analysis of lysates from LOVO cells, using GPR20 Antibody. The lane on the right is blocked with the synthesized peptide.